

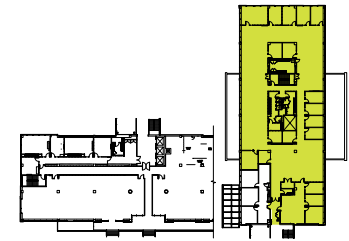
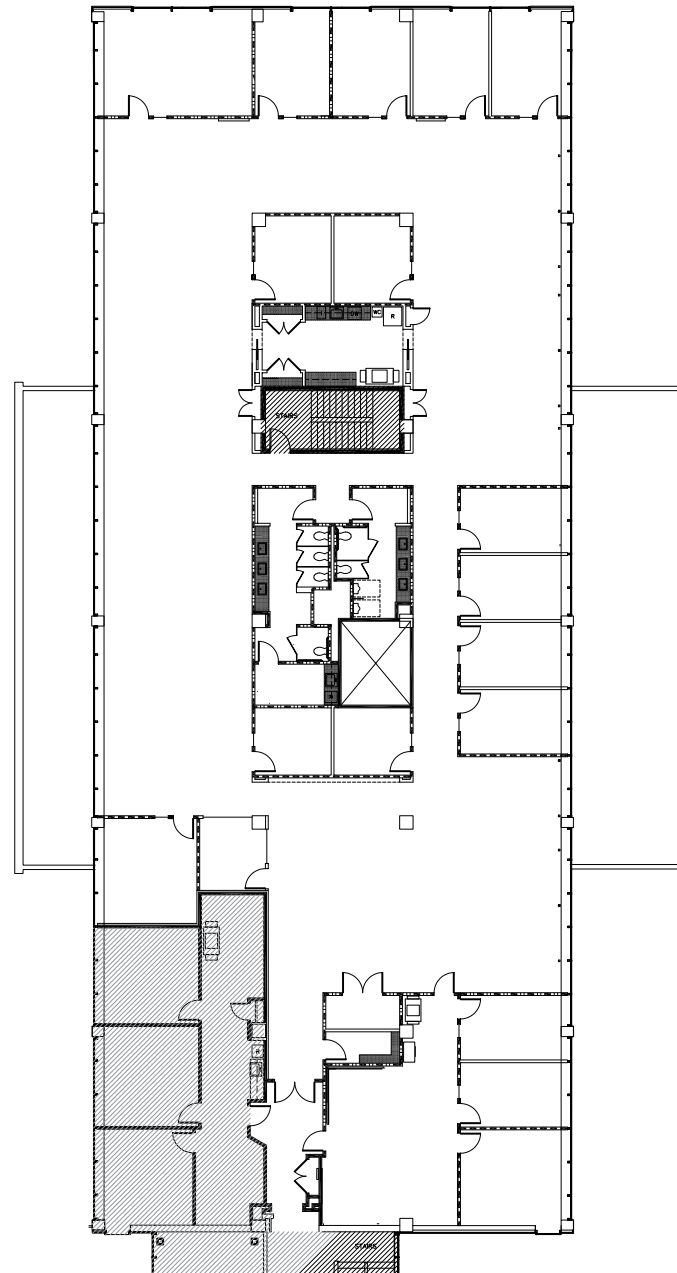


ONE PRESIDENTIAL
AVAILABILITIES

ONEPRESIDENTIALBALA.COM

OFFICE

Suite	#210
Floor	Second
Size	13,000 RSF



Josh Sloan

+1 215 988 5554

joshua.sloan@am.jll.com

Whitney Hunter

+1 610 249 2261

whitney.hunter@am.jll.com

Nick Sannelli

+1 610 249 2269

nick.sannelli@am.jll.com

Jones Lang LaSalle Brokerage, Inc.

1235 Westlakes Drive, Suite 210, Berwyn, PA 19312

+1 610 249 2255

Although information has been obtained from sources deemed reliable, neither Owner nor JLL makes any guarantees, warranties or representations, express or implied, as to the completeness or accuracy as to the information contained herein. Any projections, opinions, assumptions or estimates used are for example only. There may be differences between projected and actual results, and those differences may be material. The Property may be withdrawn without notice. Neither Owner nor JLL accepts any liability for any loss or damage suffered by any party resulting from reliance on this information. If the recipient of this information has signed a confidentiality agreement regarding this matter, this information is subject to the terms of that agreement. ©2021. Jones Lang LaSalle Brokerage, Inc. All rights reserved.

